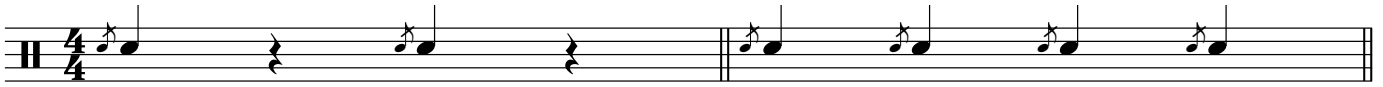


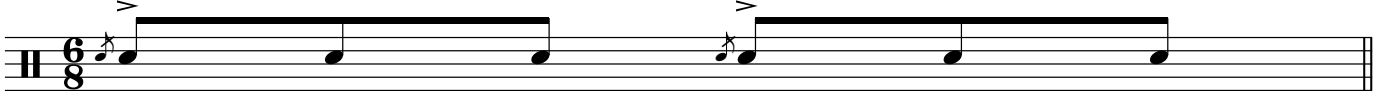
Flams 1

Play these open & closed.



- a) L R L R L R L R L R L R
- b) R L R L R L R L R L R L
- c) L R R L L R R L L R R L

Flam Accent



- L R L R R L R L

Flam Tap



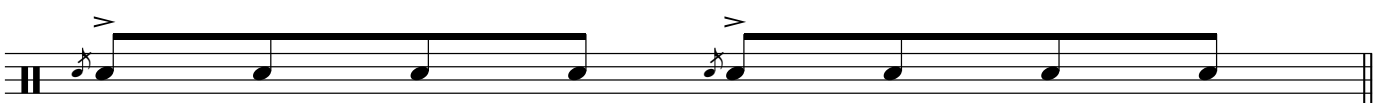
- L R R R L L L R R R L L

Flamacue



- L R L R L L R

Flam Paradiddle



- L R L R R R L R L L